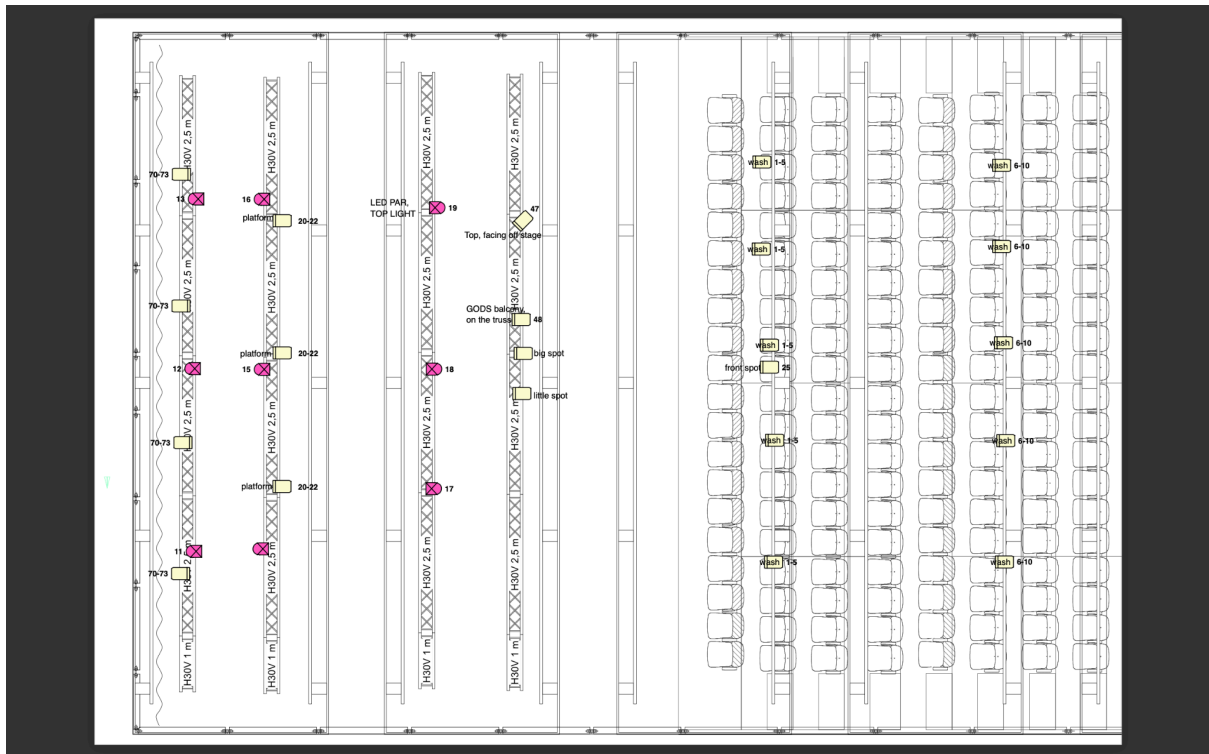


ARAWHATA TECHNICAL RIDER

BLACK BOX CONFIGURATION (Hannah Playhouse, Q Theatre)

GRID



STAGE

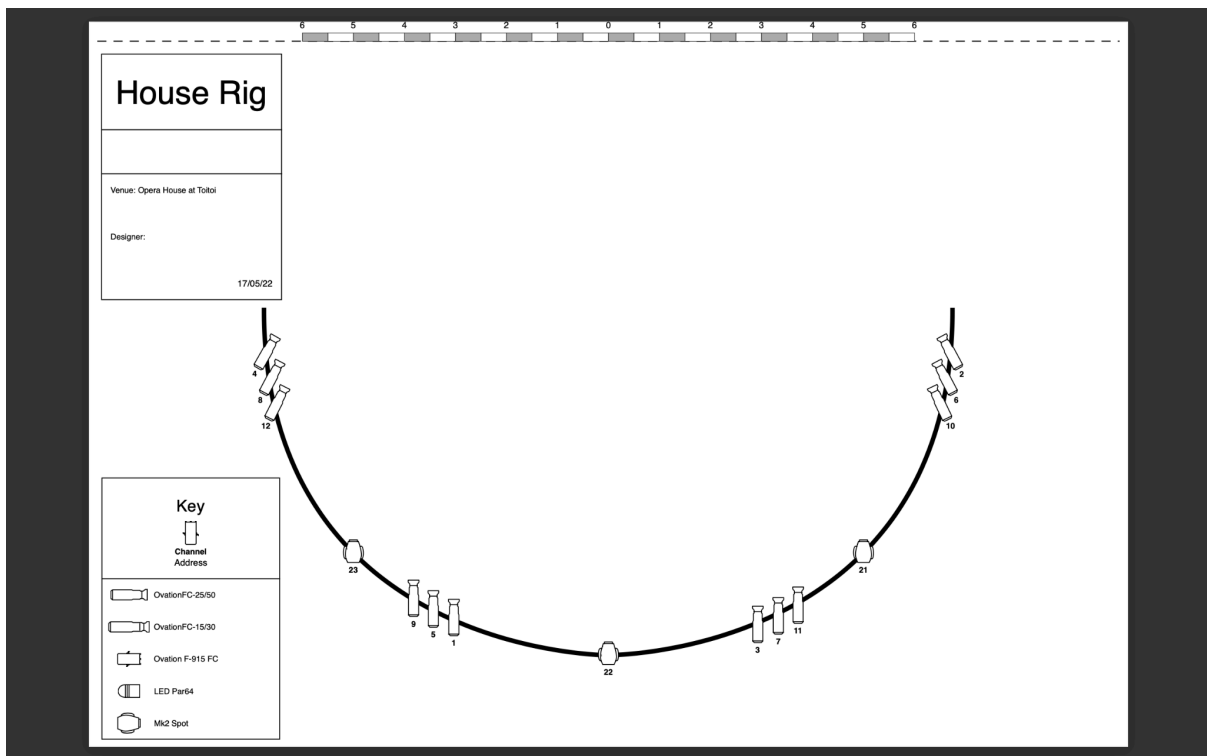


Consisting of:

- 1.2mx1.2m platform x3
- 6x boom base
- 6x 2m scaff
- 6x 0.5m scaff
- 6x Double coupler

- 9x LED Par Multi
- 3x LED bar
- 6x Pacific 23-50
- 24x Rama PC/1200w fresnel
- 3x 2 bulb blinders
- 2x robe/Mk2 mover that can give edged spots
- 4x 500w fresnel
- 1x haze machine + Haze fluid
- 201 gels for 6x pacifics

FOH



Consisting of:

- OvationFC-25/50 x 12
- OvationFC-15/30
- Ovation F-915 FC x28
- LED Par64 x 6
- Mk2 Spot x 11
- Haze machine

OUR STANDARD TECH REQUIREMENTS

LX

- 1.2mx1.2m platform x3
- 6 boom base + 2m scaff x 6
- 9x LED Par Multi
- 3x LED bar
- 6x Pacific 23-50
- 24x Rama PC/1200w fresnel
- 3x 2 bulb blinders
- 1x haze machine + Haze fluid
- 2x robe/Mk2 mover that can give edged spots
- 4x 500w fresnel
-

SX

- Wireless Microphones x2
- PA system
- Playback from show laptop
- Foldback
- Option for instruments to be amplified